

IM & PM 313

DITCH CLEANER

MK II

INSTRUCTION & PARTS BOOK

ISSUE 1

IMPORTANT

NOTE HERE THE SERIAL NUMBER OF YOUR MACHINE AND ALWAYS QUOTE IT IN ANY COMMUNICATION WITH US OR YOUR DEALER. THIS IS PARTICULARLY IMPORTANT WHEN ORDERING SPARES. REMEMBER TO INCLUDE ALL NUMBERS AND LETTERS.

MACHINE SERIAL NUMBERS _____

THE INFORMATION GIVEN THROUGHOUT THIS MANUAL IS CORRECT AT THE TIME OF PUBLICATION. HOWEVER, IN THE COURSE OF CONSTANT DEVELOPMENT OF BOMFORD TURNER MACHINES, CHANGES IN SPECIFICATION ARE INEVITABLE. SHOULD YOU FIND THE INFORMATION GIVEN IN THIS BOOK TO BE AT VARIANCE WITH THE MACHINE IN YOUR POSSESSION, YOU ARE ADVISED TO CONTACT THE BOMFORD TURNER SERVICE DEPARTMENT WHERE UP-TO-DATE INFORMATION WILL BE PROVIDED.

THE MANUAL CAN CONTAIN STANDARD AND OPTIONAL FEATURES AND IS NOT TO BE USED AS A MACHINE SPECIFICATION.

THE MACHINE HAS BEEN TESTED AND IS CONSIDERED SAFE IF CAREFULLY USED. ENSURE YOUR OPERATOR IS PROPERLY TRAINED IN ITS USE AND MAINTENANCE.

IMPORTANT

NOTEZ ICI LES NUMEROS DE SERIE DE VOTRE MACHINE ET MENTIONNEZ LES DANS TOUTE COMMUNICATION AVEC NOS SERVICES OU VOTRE REVENDEUR. CECI EST IMPORTANT POUR LA COMMANDE DE PIECES DETACHEES. PENSEZ A NOTER TOUS LES NUMEROS ET TOUTES LES LETTERS.

NUMEROS DE SERIE DE LA MACHINE _____.

LES INFORMATIONS DONNEES DANS CE MANUEL SONT CORRECTES CEPENDANT, DU FAIT DE DEVELOPPEMENT CONSTANT DES MACHINES BOMFORD TURNER.

CHANGEMENTS DANS LES CARACTERISTIQUES SONT INEVITABLES.

SI VOUS TROUVEZ QUE LES INFORMATIONS DONNEES NE CORRESPONDENT PAS A VOTRE MACHINE VEUILLEZ CONTACTER LE SERVICE DES REPARATIONS OU DES INFORMATIONS PLUS RECENTES VOUS SERONT DONNEES.

CE MANUEL PEUT MONTRER DES CARACTERISTIQUES OPTIONNELLES ET NE PEUT PAS ETRE CONSIDERE COMME SPECIFICATION DE LA MACHINE.

CETTE MACHINE A ETE TESTEE, ET ELLE EST CONSIDEREE COMME FIABLE A CONDITION D'UNE BONNE UTILISATION. ASSUREZ-VOUS QUE VOTRE OPERATEUR EST QUALIFIE EN CE QUI CONCERNE L'UTILISATION DE LA MACHINE AINSI QUE SON ENTRETIEN.

WICHTIG

TRAGEN SIE HIER DIE SERIENNUMMERN IHRER MASCHINE EIN UND GEBEN SIE DIESE IMMER AN, WENN SIE SICH AN UNS ODER IHREN HÄNDLER WENDEN. DAS IST BESONDERS BEI ERSATZTEILBESTELLUNGEN WICHTIG. VERGESSEN SIE NICHT, ALLE ZAHLEN UND BUCHSTABEN ZU NOTIEREN.

SERIENNUMMERN DER MASCHINE _____

DIE ANGABEN IN DIESEM HANDBUCH SIND BEI VERÖFFENTLICHUNG KORREKT. AUFGRUND DER KONSTANTEN WEITERENTWICKLUNG VON BOMFORD TURNER MASCHINEN SIND JEDOCHÄNDERUGDEN IN DER SPEZIFIKATION UNVERMEIDLICH. WENN DIE INFORMATION IN DIESEM HANDBUCH NICHT MIT IHRER MASCHINE ÜBEREINSTIMMEN, NEHMEN SIE BITTE KONTAKT MIT DER BOMFORD TURNER KUNDENDIENSTABTEILUNG AUF, DIE IHNEN GERNE DIE AKTUELLEN INFORMATION ZUKOMMEN LÄSST.

DAS HANDBUCH KANN SOWOHL BESCHREIBUNGEN FÜR DIE STANDARD AUSFÜHRUNG ALS AUCH FÜR ZUBEHÖR ENTHALTEN UND IST NICHT ALS MASCHINENSPEZIFIKATION ZU VERWENDET.

DIE MASCHINE IST GETESTET UND BEI SACHGEMÄSSEM BETRIEB ALS SICHER BEFUNDEN WORDEN. SORGEN SIE DAFÜR, DASS IHR BEDIENPERSONAL IN ANWENDUNG UND WARTUNG RICHTIG GESCHULT WIRD.

IMPORTANT

VERIFICATION OF WARRANTY REGISTRATION

(Applies to UK Machines only)



UK DEALER WARRANTY INFORMATION & REGISTRATION VERIFICATION

It is imperative that the selling dealer registers this machine with Bomford Turner Limited within 7 days of delivery to the end user – failure to do so may affect the validity of the machine warranty.

To register a machine go to the Bomford Turner Ltd web site at **www.Bomford-Turner.com**, log on to '**BOMFORD PLUS**' and select the '**Machine Registration button**' which can be found in the Service Section of the site. Confirm to the customer that the machine has been registered in the section below.

Should you experience any problems registering a machine in this manner please contact the Bomford Turner Service Department on 01789 773383.

Registration Verification (UK Machines)

Dealer Name:
Dealer Address:
Customer Name:
Date of Warranty Registration:/...../..... Dealer Signature:

NOTE TO CUSTOMER / OWNER

Please ensure that the above section above has been completed and signed by the selling dealer to verify that your machine has been registered with Bomford Turner Ltd.

EC DECLARATION OF CONFORMITY

Conforming to EU Directive 2006/42/EC

We,

Of BOMFORD TURNER LIMITED, Station Road, Salford Priors, Evesham, Worcestershire,
WR11 8SW, UK

Declare that we are the authorised representative, responsible for the product (type);

Reach Arm attachment	Product Code
ROTARY DITCH CLEANER	DC58

A vegetation control tractor mounted arm mowing attachment.

Serial No(s). & Date:.....

Designed and Manufactured: UK

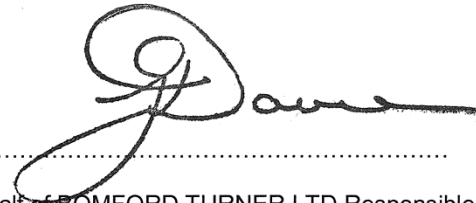
This product complies with the required provisions of;

- Directive 2006/42/EC
- Directive 2004/108/EC
- BS EN ISO 12100-1:2010

And other national standards associated with its design and construction as listed in its technical file.

BOMFORD TURNER LIMITED operates an ISO 9001:2008 quality management system.
This system is accredited by;

BSI, Beech House, Linford Wood, Milton Keynes, UK, MK14 6ES
BSI identification number: UKAS 003
Bomford Turner certificate number: FM 34659

Signed.....


On behalf of BOMFORD TURNER LTD Responsible person

Status: Managing Director

Date: 02/01/2010

LIST OF CONTENTS

Operator Section

Page No.

General Information	1
Safety Information	2
Flows & Pressures	7
Fitting	7
Back Pressure Valve	8
Operation	9
Maintenance	10

Parts Section

Main Assembly	13
Hydraulic Operation Models	17
Back Pressure Valve	21
Hydraulic Hoses & Diverter Valve Connections	23
Blade Options	24

GENERAL INFORMATION

Read this manual before fitting or operating the machine. Whenever any doubt exists contact your dealer or Bomford Turner Service Department for advice and assistance.

Use only Bomford Turner ‘Genuine Service Parts’ on Bomford Turner equipment and machines.

DEFINITIONS: The following definitions apply throughout this manual:

WARNING:

An operating procedure, technique etc., which can result in personal injury or loss of life if not observed carefully.

CAUTION:

An operating procedure, technique etc., which can result in the damage of either machine or equipment if not observed carefully.

NOTE:

An operating procedure, technique etc., which is considered essential to emphasize.

LEFT AND RIGHT HAND:

This term is applicable to the machine when fitted to the tractor and viewed from the rear, this also applies to tractor references.

To be assured of the latest design improvements purchase your ‘**Genuine Replacements**’ from the **Original Equipment Manufacturer: Bomford Turner LIMITED** through your local Dealer or Stockist.

Always quote:

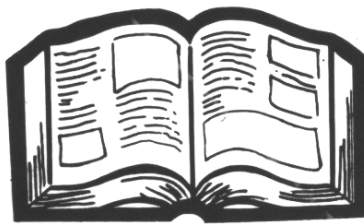
- **Machine Type**
- **Serial Number**
- **Part Number**

Record the Serial No. of your machine on this page and always quote this number when ordering spares along with the type and model of tractor your machine is fitted to.

Machine Serial No.	Model Details:	Installation Date:
Dealer Name:		Dealer Telephone:
Dealer Address:		



SAFETY INFORMATION



SAFETY INFORMATION

This machine has the potential to be extremely dangerous, in the wrong hands it can kill or maim. It is therefore imperative that the owner, and the operator of this machine, read the following section to ensure that they are both fully aware of the dangers that do, or may exist, and their responsibilities surrounding its use.

The operator of this machine is responsible not only for their own safety but equally for the safety of others who may come into the close proximity of the machine, as the owner you are responsible for both.

POTENTIAL SIGNIFICANT DANGERS ASSOCIATED WITH THE USE OF THIS MACHINE:

- ▲ *Being hit by debris thrown by rotating components.*
- ▲ *Being hit by machine parts ejected through damage during use.*
- ▲ *Being caught on a rotating power take-off (PTO) shaft.*
- ▲ *Being caught in other moving parts i.e.: belts, pulleys and cutting heads.*
- ▲ *Electrocution from Overhead Power Lines (by contact with or 'flashover' from).*
- ▲ *Being hit by cutting heads or machine arms as they move.*
- ▲ *Becoming trapped between tractor and machine when hitching or unhitching.*
- ▲ *Tractor overbalancing when machine arm is extended.*
- ▲ *Injection of high pressure oil from hydraulic hoses or couplings.*
- ▲ *Machine overbalancing when freestanding (out of use).*
- ▲ *Road traffic accidents due to collision or debris on the road.*

BEFORE USING THIS MACHINE YOU MUST:

- ▲ *Ensure you read all sections of the operator handbook.*
- ▲ *Ensure the operator is, or has been, properly trained to use the machine.*
- ▲ *Ensure the operator has been issued with and reads the operator handbook.*
- ▲ *Ensure the operator understands and follows the instructions in operator handbook.*
- ▲ *Ensure the tractor front, rear and side(s) are fitted with metal mesh or polycarbonate guards of suitable size and strength to protect the operator against thrown debris or parts.*
- ▲ *Ensure tractor guards are fitted correctly, are undamaged and kept properly maintained.*

- ▲ *Ensure that all machine guards are in position, are undamaged, and are kept maintained in accordance with the manufacturer's recommendations.*
- ▲ *Ensure flails and their fixings are of a type recommended by the manufacturer, are securely attached and that none are missing or damaged.*
- ▲ *Ensure hydraulic pipes are carefully and correctly routed to avoid damage by chaffing, stretching or pinching and that they are held in place with the correct fittings.*
- ▲ *Always follow the manufacturer's instructions for attachment and removal of the machine from the tractor.*
- ▲ *Check that the machine fittings and couplings are in good condition.*
- ▲ *Ensure the tractor meets the minimum weight recommendations of the machine manufacturer and that ballast is used as necessary.*
- ▲ *Always inspect the work area thoroughly before starting to note obstacles and remove wire, bottles, cans and other debris.*
- ▲ *Use clear suitably sized warning signs to alert others to the nature of the machine working within that area. Signs should be placed at both ends of the work site. (It is recommended that signs used are of a size and type specified by the Department of Transport and positioned in accordance with their and the Local Highways Authority guidelines).*
- ▲ *Ensure the operator is protected from noise. Ear defenders should be worn and tractor cab doors and windows must be kept closed. Machine controls should be routed through proprietary openings in the cab to enable all windows to be shut fully.*
- ▲ *Always work at a safe speed taking account of the conditions i.e.: terrain, highway proximity and obstacles around and above the machine.*
- ▲ *Extra special attention should be applied to Overhead Power Lines. Some of our machines are capable of reach in excess of 8 metres (26 feet) this means they have the potential to well exceed, by possibly 3 metres (9' 9"), the lowest legal minimum height of 5.2 metres from the ground for 11,000 and 33,000 volt power lines. It cannot be stressed enough the dangers that surround this capability, it is therefore vital that the operator is fully aware of the maximum height and reach of the machine, and that they are fully conversant with all aspects regarding the safe minimum distances that apply when working with machines in close proximity to Power Lines. (Further information on this subject can be obtained from the Health & Safety Executive or your Local Power Company).*
- ▲ *Always disengage the machine, kill the tractor engine, remove and pocket the key before dismounting for any reason.*
- ▲ *Always clear up all debris left at the work area, it may cause hazard to others.*
- ▲ *Always ensure when you remove your machine from the tractor that it is left in a safe and stable position using the stands and props provided and secured if necessary.*

WHEN NOT TO USE THIS MACHINE:

- ▲ *Never attempt to use this machine if you have not been trained to do so.*
- ▲ *Never uses a machine until you have read and understood the operator handbook, are familiar with, and practiced the controls.*
- ▲ *Never use a machine that is poorly maintained.*
- ▲ *Never use a machine if guards are missing or damaged.*
- ▲ *Never use a machine on which the hydraulic system shows signs of wear or damage.*
- ▲ *Never fit, or use, a machine on a tractor that does not meet the manufacturer's minimum specification level.*
- ▲ *Never use a machine fitted to a tractor that does not have suitable front, rear and side(s) cab guarding made of metal mesh or polycarbonate.*
- ▲ *Never use the machine if the tractor cab guarding is damaged, deteriorating or badly fitted.*
- ▲ *Never turn a machine cutting head to an angle that causes debris to be ejected towards the cab.*
- ▲ *Never start or continue to work a machine if people are nearby or approaching - Stop and wait until they are at a safe distance before continuing.*
- ▲ *Never attempt to use a machine on materials in excess of its capability.*
- ▲ *Never use a machine to perform a task it has not been designed to do.*
- ▲ *Never operate the tractor or machine controls from any position other than from the driving seat, especially whilst hitching or unhitching the machine.*
- ▲ *Never carry out maintenance of a machine or a tractor whilst the engine is running – the engine should be switched off, the key removed and pocketed.*
- ▲ *Never leave a machine unattended in a raised position – it should be lowered to the ground in a safe position on a level firm site.*
- ▲ *Never leave a tractor with the key in or the engine running.*
- ▲ *Never carry out maintenance on any part or component of a machine that is raised unless that part or component has been properly substantially braced or supported.*
- ▲ *Never attempt to detect a hydraulic leak with your hand – use a piece of cardboard.*
- ▲ *Never allow children near to, or play on, a tractor or machine under any circumstances.*

ADDITIONAL SAFETY ADVICE

TRAINING

Operators need to be competent and fully capable of operating this machine in a safe and efficient way prior to attempting to use it in any public place. We advise therefore that the prospective operator make use of relevant training courses available such as those run by the Agricultural Training Board, Agricultural Colleges, Dealers and Bomford Turner.

WORKING IN PUBLIC PLACES

When working in public places such as roadsides, consideration should be paid to others in the vicinity. Stop the machine immediately when pedestrians, cyclists and horse riders etc. pass. Restart only when they are at a distance that causes no risk to their safety.

WARNING SIGNS

It is advisable that any working area be covered by suitable warning signs and statutory in public places. Signs should be highly visible and well placed in order to give clear advanced warning of the hazard. Contact the Department of Transport or your Local Highways Authority to obtain detailed information on this subject. The latter should be contacted prior to working on the public highway advising them of the time and location of the intended work asking what is required by way of signs and procedure. – *‘Non-authorised placement of road signs may create offences under the Highways Act’.*

SUGGESTED WARNING SIGNS REQUIRED

“Road works ahead” warning sign with a supplementary ***“Hedge cutting”*** plate. ***“For 1 mile”*** or appropriate shorter distance may be added to the plate.

“Road narrows” warning sign with supplementary ***“Single file traffic”*** plate.

White on blue ***“Keep right”*** arrow sign on rear of machine.

USE OF WARNING SIGNS

- ▲ *On two way roads one set of signs is needed facing traffic in each direction.*
- ▲ *Work should be within 1 mile of the signs.*
- ▲ *Work only when visibility is good and at times of low risk e.g.: NOT during ‘rush-hour’.*
- ▲ *Vehicles should have an amber flashing beacon.*
- ▲ *Ideally, vehicles should be conspicuously coloured.*
- ▲ *Debris should be removed from the road and path as soon as practicable, and at regular intervals, wearing high visibility clothing and before removing the hazard warning signs.*
- ▲ *Collect all road signs promptly when the job is completed.*

Although the information given here covers a wide range of safety subjects it is impossible to predict every eventuality that can occur under differing circumstances whilst operating this machine. No advice given here can replace ‘good common sense’ and ‘total awareness’ at all times but will go a long way towards the safe use of your Bomford Turner machine.

FLOWS & PRESSURES – *For reliable working*

HIGH SPEED VERSION

Maximum continuous flow	-	100 L/min
Maximum continuous speed	-	500RPM
Maximum continuous pressure	-	210 Bar

PA50,52,53,59
540 PTO MAX

PA55 - 7700T
430 PTO MAX

STANDARD SPEED VERSION

Maximum continuous flow	-	125 L/min
Maximum continuous speed	-	320RPM
Maximum continuous pressure	-	210 Bar

PA50,52,53,59
540 PTO MAX

PA55 - 7700T
540 PTO MAX

OPERATING CONDITIONS FOR BOTH VERSIONS

Return line pressure	-	2 Bar min to 20 Bar max*
Maximum drain line pressure	-	5 Bar
Optimum Viscosity	-	35 – 200cSt
Optimum temperature	-	40 - 70°C
Fluid Cleanliness	-	NAS 9/ ISO 18/15

*** On non electric rotor control valve or non piston machines a Back Pressure Kit should be fitted or motor life will be seriously reduced.**

FITTING

The Rotary Ditcher and Rotary Cleaner can be fitted only to Power Arm machines that are equipped with hydraulic slewing/breakaway action.

The procedure for fitting the units is as follows:

Flailhead Removal

- Disconnect the flailhead hoses on both sides of the hose junction bracket.
- Unbolt the hose junction bracket from the angling jaw plate.
- Unbolt the flailhead from the mounting tube and remove together with the hoses and the junction bracket - *plug or cover the ends of the hoses to prevent access of contaminants during storage.*

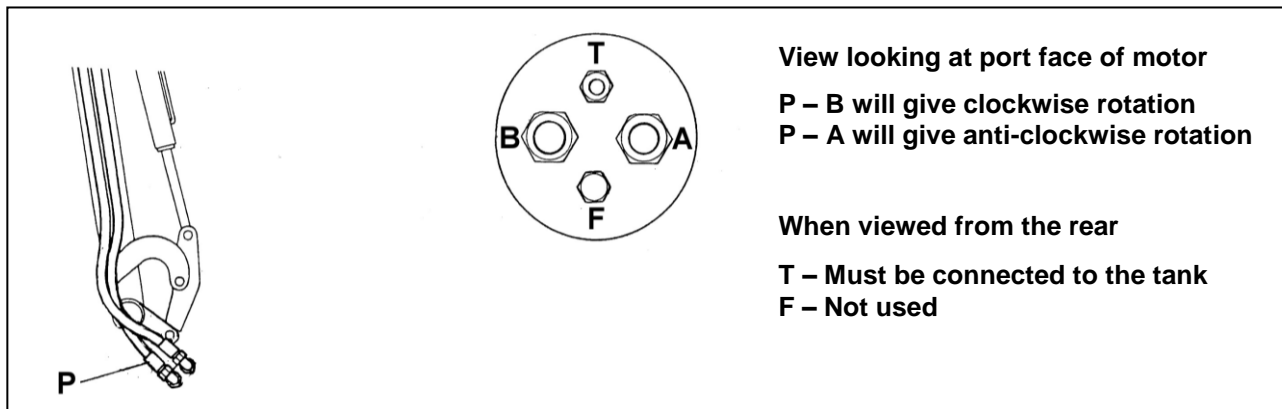
Fitting of Ditcher/Cleaner Unit

- Bolt the Ditcher/Cleaner to the dipper arm ensuring that the top plate is horizontal when the angling ram is approximately half extended - *i.e. at the mid-point of its stroke.*

On machines with piston hydraulics connect 'T' connection to the drain line on the machine *or* connect motor drain line as supplied in the kit (see below).

Using Drain Line Supplied with the Kit

- If using the drain line supplied with the kit the hose guards should be removed from the Power Arms and the $\frac{3}{8}$ " BSP drain hose from the Ditcher/Cleaner secured alongside, and attached to, the existing Power Arm hoses using the hose ties supplied.
Note: - *Ensure that that sufficient 'slack' is allowed for over the arm pivots to permit the hoses to flex properly.*
- Refit hose guards.
- Unscrew the breather from the tank top and remove the 'O' ring from the union.
- Fit the $\frac{3}{4}$ " BSP M/F adaptor onto the breather union together with the $\frac{3}{4}$ " BSP bonded washer supplied.
- Refit the breather using the existing 'O' ring.
- Screw the $\frac{3}{4}$ " BSP M/M union into the side of the breather extended adaptor using the $\frac{3}{4}$ " BSP bonded washer supplied.
- Connect the motor drain hose.
- Connect up the 1" BSP hoses to the existing flail hoses using the 1" BSP union provided to give the rotation of cut required – see *diagram below*.



BACK PRESSURE KIT - Gear Hydraulic machines only

Note: Electric Reverse Gear and Piston Machines DO NOT require a Back Pressure Kit.

A Back Pressure Kit is provided to prevent the motor from becoming 'starved' of oil during normal operation and whilst stopping and starting. The kit must be fitted in the return line hose from the motor and normally fits directly onto the motor control valve. This installation is as follows:

- The tank return 'T' (*complete with hose*) is disconnected from the valve, the back pressure valve is fitted onto the union and the 'T' reconnected onto the free end of the back pressure valve.
- Disconnect the pressure hose from the pump, fit the 1" BSP 'T' piece to the pressure port adaptor and reconnect the pressure hose.
- Complete the installation by joining the back pressure valve and the pressure line 'T' using the $\frac{1}{4}$ " hose provided.

NOTE: *This installation allows the operator to select opposite rotation to clear a blockage.*

CAUTION

On reverting back to hedgecutting/mowing the Back Pressure Kit MUST BE REMOVED

OPERATION

Read the Book First

Before attempting to operate this machine it is imperative that both the owner and operator has read, and fully understood, not only this manual but also that of any machine it is attached to, and that they are fully conversant with all operation and safety aspects surrounding its use.

- Check all nuts and bolts are tight and that the 1" BSP hose connections give the desired rotation of cut when the lever is operated such: -

Upward Cutting	= Clockwise Rotation	} <i>When viewed from the front</i>
Downward Cutting	= Anti-clockwise Rotation	

If found to be opposite to above the 1" BSP hoses must be interchanged at the jointing union.

- Examine the ditch for obstacles and dangerous materials e.g. metal, wire, glass, large stones etc. and remove before commencing.

ADJUSTMENTS

Approach Angle

The Ditch Cleaner can be rotated on its mounting plate to give 5 approach angles to the ditch - this is achieved by removing the 3 mounting bolts enabling the main body to be pivoted about its central spindle to the required position.

Cutters

The double-edged blades and paddles can be adjusted to allow cutting with either a clockwise or anti-clockwise rotation - if using single-edged blades an opposite hand set of blades will be needed if it is required to cut with the opposite rotation.

Blades

The double-edged blades, which are slotted, pivot about the outer mounting bolt to allow for rotation of cut. For anti-clockwise cutting action (*when viewed from the front*) the blade is pivoted clockwise to the limit of the slot and visa-versa.

Blade options include:

Double edged blade (*Part No. 41.216.01*) – Good cutting performance in harder soils

Single edged blade (*Part No. 41936.01*) – L/H Standard Duty – good throwing performance.

Single edged blade (*Part No. 41936.02*) – R/H Standard Duty – good throwing performance.

Single edged blade (*Part No. 41936.03*) – L/H Heavy Duty – good throwing performance.

Single edged blade (*Part No. 41936.04*) – R/H Heavy Duty – good throwing performance.

NOTE: Blades should be fitted in sets of 3 and be of similar weight in order to maintain rotor balance.

Paddles

The function of the paddles is to aid the excavation of material from the cutting area. There are 2 possible positions available for mounting the paddles; the correct position will depend on the direction of cut – whichever the direction, the paddles should always be fitted with the paddle face leading and the paddle body sloping backwards from the rotation of cut.

Spoil Deflector

The spoil deflector consists of two sections, the first is fixed whilst the second pivots to allow a choice of 8 positions to control and guide the direction of thrown spoil. The adjustments allow the angle of cut and the outboard destination of the spoil to be selected for both right and left hand mounted machines. To deflect the spoil inboard a reverse chute and blade kit is available.

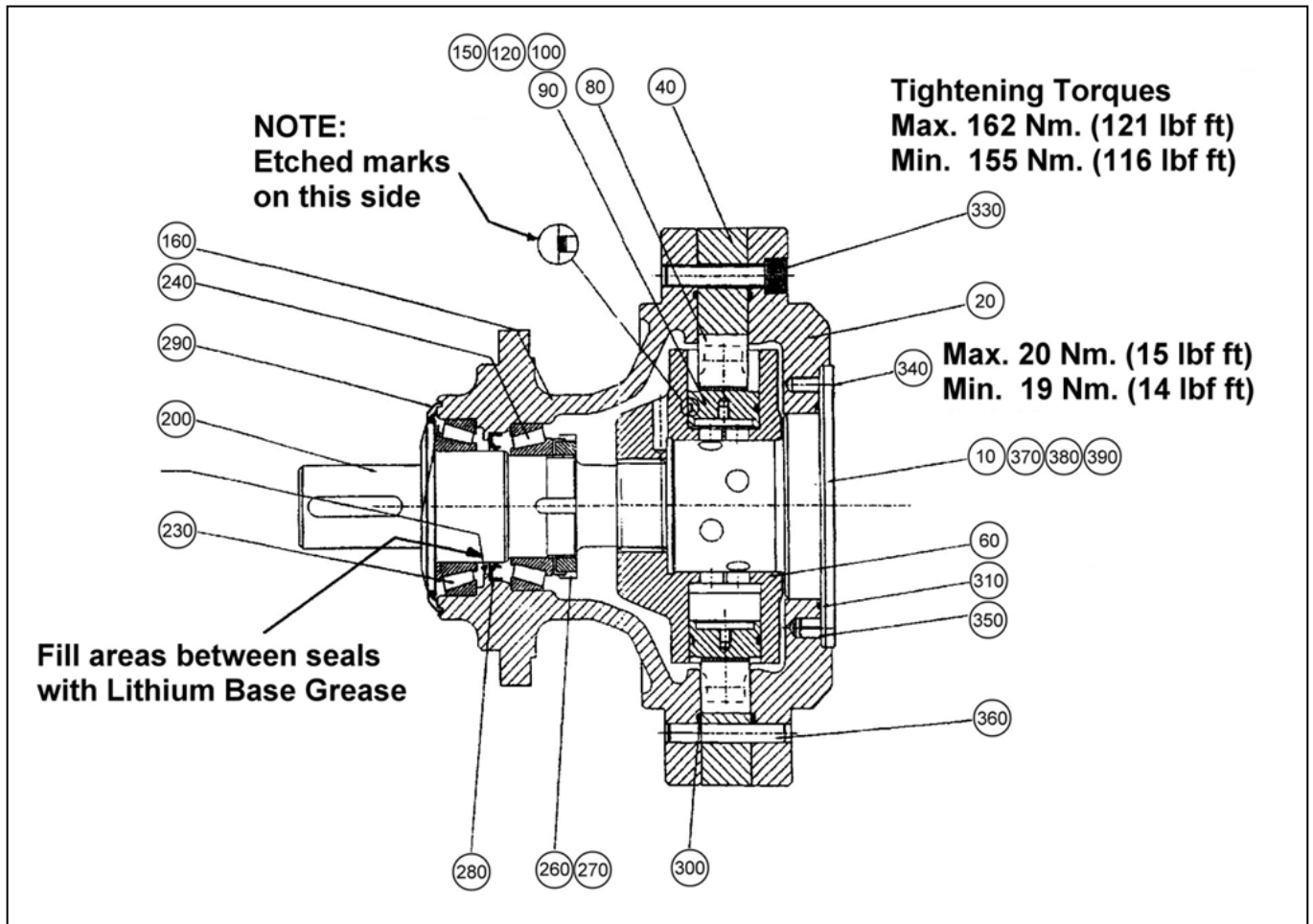
MAINTENANCE

Ditch Cleaner Shaft Seal Replacement

1. Slacken evenly, the eight bolts (*item 330*) to release the output housing from the torque unit. NOTE THE ORIENTATION OF THE HOUSING TO THE TORQUE UNIT.
2. Carefully lift off the output housing taking care not to disturb the rotor in the torque unit when disengaging the spline drive.
3. Unlock washer (*item 270*) and release the nut (*item 260*) which holds the bearing under pre-load, remove both.
4. Supporting the housing (*item 160*) press the shaft out from the splined end. This will remove the cone of the inner bearing (*item 240*) from the shaft.
5. Remove from housing the bearing cone from the inner bearing (*item 240*).
6. Remove the shaft seal (*item 280*).
7. Clean all parts thoroughly.

Re-Assembly

1. Press a new shaft seal (*item 280*) carefully and squarely into the output housing (*item 160*).
2. Press the bearing cup from the inner bearing (*item 240*) back into its bore in the housing, taking care to ensure it faces the correct way.
3. Fill the area between the end of the housing and the shaft seal with lithium based grease as stated on the attached assembly drawing.
4. Holding the keyed end of the shaft (*item 200*) vertically in a vice, lower the output housing onto it so that it sits squarely on the outer bearing (*item 230*).
5. Warm slightly, the inner bearing cone to help with assembly, then press it on to the shaft until it sits in the cone, ensuring that the bearing is installed the correct way.
6. Re-fit the locking tab and the locking nut and tighten the unit to 24-lbf ft.
7. Re-fit the locking tab. If the tab does not line up with any slot in the nut, tighten the nut to line up a tab with a slot in the nut.
8. Spin the housing to ensure the bearings are seated correctly and that there is no end play on them.
9. Check the 'O' ring (*item 300*) in the housing face is O K, then lower it onto the torque unit, taking care to align the splines correctly and that the output housing to the torque unit orientation is as it was before stripdown.
10. Re-fit and tighten evenly, the eight bolts (*item 330*). Check regularly during tightening that the shaft is free to rotate, thus ensuring that the alignment of the output housing and torque unit is correct.
11. Tighten the eight bolts to the recommended torque setting (*see diagram on following page*).



PARTS SECTION

For best performance...

USE ONLY BOMFORD SERVICE PARTS

To be assured of the latest design improvements purchase your '**Genuine Replacements**' from the Original Equipment Manufacturer: **BOMFORD TURNER LTD** through your local Dealer or Stockist.

Always quote:

- **Machine Type**
- **Serial Number**
- **Part Number**

Design Improvements may have altered some of the parts listed in this manual – the latest part will always be supplied when it is interchangeable with an earlier one.

ROTARY DITCHER/DITCH CLEANER

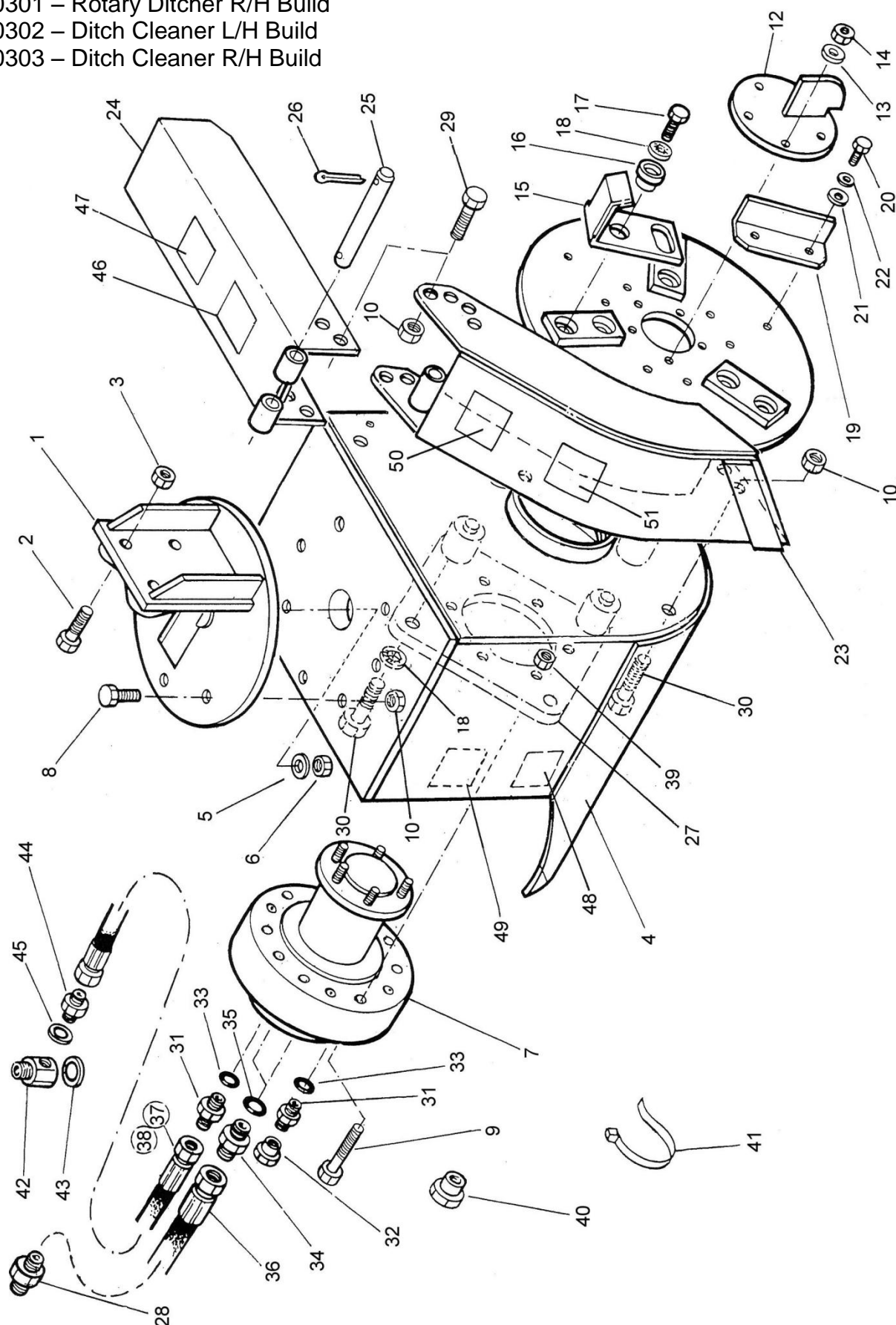
Modules:

6600300 – Rotary Ditcher L/H Build

6600301 – Rotary Ditcher R/H Build

6600302 – Ditch Cleaner L/H Build

6600303 – Ditch Cleaner R/H Build

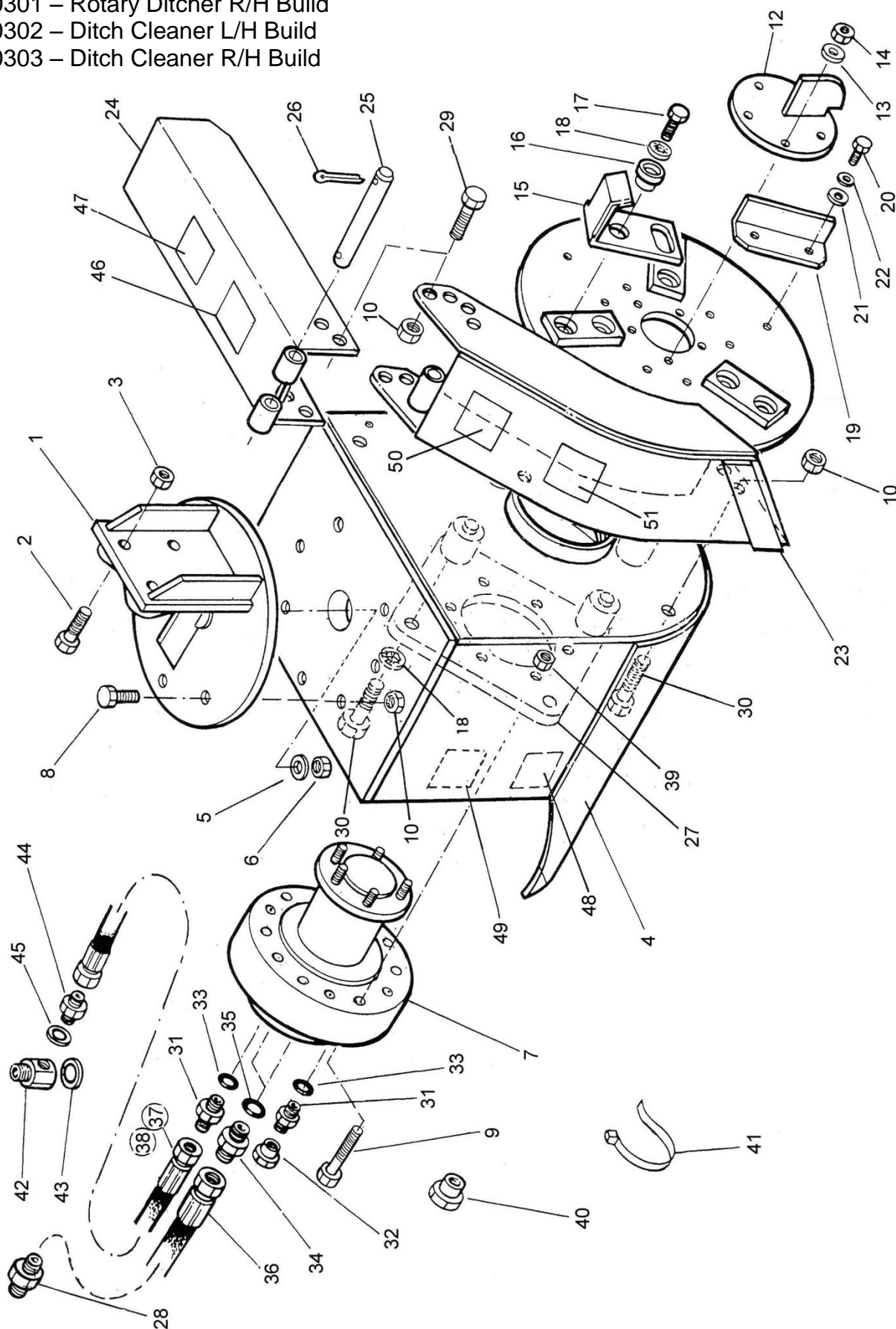


ROTARY DITCHER/DITCH CLEANER

REF.	QTY.	PART No.	DESCRIPTION
		6600300	ROTARY DITCHER ASSEMBLY - L/H build
		6600301	ROTARY DITCHER ASSEMBLY - R/H build
		6600302	DITCH CLEANER ASSEMBLY - L/H build
		6600303	DITCH CLEANER ASSEMBLY - R/H build
1	1	41.210.01	MOUNTING BRACKET
2	4	0211226	BOLT
3	6	0141006	SELF-LOCKING NUT
4	1	41.208.02	HOUSING
5	1	41.214.01	WASHER
6	1	9143009	SELF-LOCKING NUT
7	1	8301289	HYDRAULIC MOTOR - Ditch Cleaner
	1	8301298	HYDRAULIC MOTOR - Rotary Ditcher
8	3	9213097	BOLT
9	6	9213186	BOLT
10	7	9143007	SELF-LOCKING NUT
11	1	41.209.01	CUTTING DISC
12	1	41.232.01	CENTRE DEFLECTOR
13	5	05.281.14	PLAIN WASHER
14	5	05.968.06	SELF-LOCKING NUT
15	3	41.216.01	BLADE - Double Edged (<i>Illustrated</i>)
	3	41936.01	BLADE - Single Edged L/H Std. Duty
	3	41936.02	BLADE - Single Edged R/H Std. Duty
	3	41936.03	BLADE - Single Edged L/H Heavy Duty
	3	41936.04	BLADE - Single Edged R/H Heavy Duty
16	6	41.231.01	COLLAR
17	6	0311126	BOLT
18	10	05.283.04	SHAKEPROOF WASHER
19	3	41.215.01	PADDLE
20	6	9313056	SETSCREW
21	6	9100106	PLAIN WASHER
22	6	9100206	SPRING WASHER
23	1	41928.01	SPOIL DEFLECTOR (FIXED) - L/H Working
	1	41928.02	SPOIL DEFLECTOR (FIXED) - R/H Working
24	1	41929.01	SPOIL DEFLECTOR (ADJUSTABLE)
25	1	41.212.01	PIVOT PIN
26	2	9501406	SPLIT PIN
27	1	41927.02	MOTOR MOUNTING ADAPTOR PLATE
28	1	05.434.01	UNION
29	2	9313067	SETCREW
30	6	9313107	SETSCREW
31	2	08.955.06	ADAPTOR
32	1	05.433.04	BLANKING CAP
33	2	8600906	O RING
34	2	8581331	ADAPTOR
35	2	8600910	O RING

Modules:

- 6600300 – Rotary Ditcher L/H Build
- 6600301 – Rotary Ditcher R/H Build
- 6600302 – Ditch Cleaner L/H Build
- 6600303 – Ditch Cleaner R/H Build



ROTARY DITCHER / DITCH CLEANER

REF.	QTY.	PART No.	DESCRIPTION
36	2	8501190	HOSE - 1" BSP SF/90F x 41" Long
37	1	8511433	HOSE - 3/8" BSP SF/SF x 300" Long
38	2	8511243	HOSE - 3/8" BSP SF/SF x 42" Long
39	6	9143006	SELF-LOCKING NUT
40	1	G3812119	BLANKING CAP - <i>Piston Hydraulic Machines</i>
41	10	7196045	HOSE TIE
42	1	41.217.01	SPECIAL ADAPTOR
43	1	8650106	BONDED SEAL
44	1	6000113	UNION
45	1	8650103	BONDED SEAL
46	1	09.821.05	DECAL - DANGER CUTTING HEAD
47	1	09.821.08	DECAL - SAFE WORKING ON HEAD
48	1	09.821.10	DECAL- KEEP NUTS TIGHT
49	1	09.821.15	DECAL - READ INSTRUCTION BOOK
50	1	09.821.20	DECAL - SHAFT ENTANGLEMENT
51	1	09.821.04	Decal - DANGER THROWN DEBRIS
		8699245	SEAL KIT - For hydraulic motor

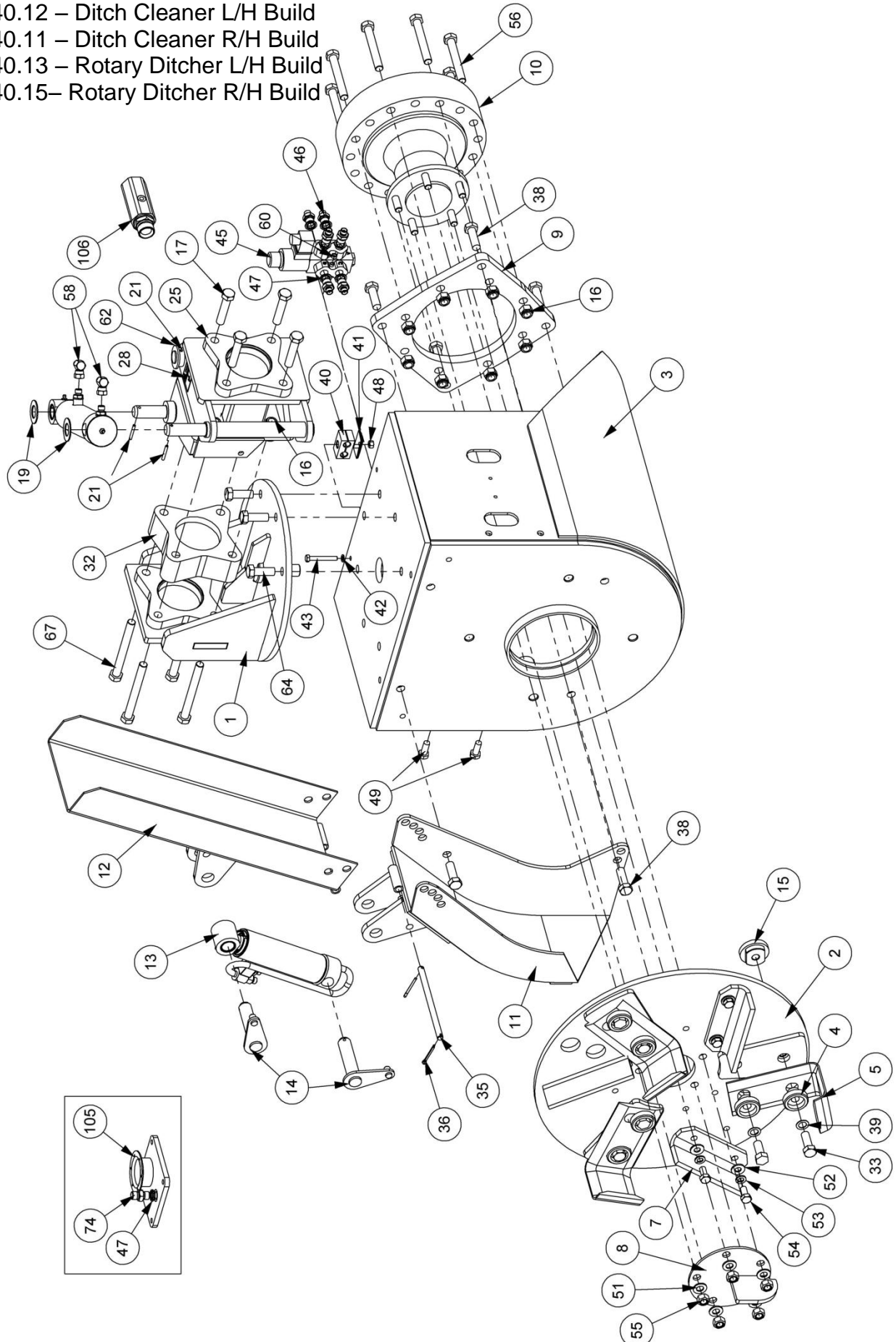
ACCESSORIES - not illustrated

	6600310	CHUTE & BLADE KIT - L/H
1	41928.01	SPOIL CHUTE - L/H
3	41936.01	BLADE - Single Edged L/H Std. Duty
	6600311	CHUTE & BLADE KIT - R/H
1	41928.02	SPOIL CHUTE - R/H
3	41936.02	BLADE - Single Edged R/H Std. Duty

Module:

- 90.440.12 – Ditch Cleaner L/H Build
- 90.440.11 – Ditch Cleaner R/H Build
- 90.440.13 – Rotary Ditcher L/H Build
- 90.440.15 – Rotary Ditcher R/H Build

Ditch Cleaner Left Hand Build Illustrated



HYDRAULIC OPERATIONS MODELS

REF.	QTY.	PART No.	DESCRIPTION
		90.440.12	DITCH CLEANER (Hydraulic Operation) - L/H Build
		90.440.11	DITCH CLEANER (Hydraulic Operation) - R/H Build
		90.440.13	ROTARY DITCHER (Hydraulic Operation) - L/H Build
		90.440.15	ROTARY DITCHER (Hydraulic Operation) - R/H Build
1	1	41.210.02	MOUNTING BRACKET
2	1	41.209.02	CUTTING DISC
3	1	41.208.02	MAIN HOUSING
4	6	41.231.01	COLLAR
5	3	41.216.01	BLADE - Double Edged (<i>Illustrated</i>)
	3	41936.01	BLADE - Single Edged L/H Std. Duty
	3	41936.02	BLADE - Single Edged R/H Std. Duty
	3	41936.03	BLADE - Single Edged L/H Heavy Duty
	3	41936.04	BLADE - Single Edged R/H Heavy Duty
6	1	41.214.01	WASHER
7	3	41.215.01	PADDLE
8	1	41.232.01	DEFLECTOR - CENTRE
9	1	41927.01	ADAPTOR PLATE - Ditch Cleaner
	1	41927.02	ADAPTOR PLATE - Rotary Ditcher
10	1	8301289	MOTOR - Ditch Cleaner
	1	8301298	MOTOR - Rotary Ditcher
11	1	41928.03	CHUTE (HYDRAULIC) - <i>L/H Build</i>
	1	41928.04	CHUTE (HYDRAULIC) - <i>R/H Build</i>
12	1	41929.02	DEFLECTOR (HYDRAULIC)
13	1	43377.03	CHUTE RAM ASSEMBLY (<i>uses Seal Kit 8699188</i>)
14	2	7192024	PIN
15	3	41.209.03	NUT SPECIAL
16	16	0141006	CLEVELOC NUT
17	4	0211246	BOLT
18	1	0901121	GREASE NIPPLE
19	2	7192001	WASHER
20	1	09.987.03	ORBITER RAM ASSEMBLY (<i>uses Seal Kit 8699188</i>)
21	3	0425540	SPRING DOWEL
22	2	7101083	LINK BUSH
23	1	41.234.01	BRACKET (FRONT) - <i>L/H Build</i>
	1	41.234.02	BRACKET (FRONT) - <i>R/H Build</i>
24	1	41.235.02	PIN
25	1	41.233.01	BRACKET (REAR) - <i>L/H Build</i>
	1	41.233.02	BRACKET (REAR) - <i>R/H Build</i>
26	8	7135084	CABLE TIE
27	1	7213005	HOSE ARMOUR
28	2	02962764	DECAL - PINCH POINTS
29	2	8581172	ADAPTOR
30	6	8581169	ADAPTOR
31	2	8581320	ADAPTER TEE
32	1	7190453	HEAD SPACER
33	3	0211146	BOLT

continued...

HYDRAULIC OPERATION MODELS

REF.	QTY.	PART No.	DESCRIPTION
34	3	0311126	SCREW
35	1	41.212.02	PIN
36	2	9501406	SPLIT PIN
37	4	0211446	BOLT
38	6	9313107	SETSCREW
39	10	05.283.04	SHAKEPROOF WASHER
40	1	7193065	HOSE CLAMP
41	3	7193066	CLAMP PLATE
42	3	9100204	SPRING WASHER
43	1	9213124	BOLT
44	1	21546.01	SPACER - DIVERTER MOUNT
45	1	41605.01	DIVERTER VALVE
46	6	8581115	ADAPTOR
47	7	8650103	BONDED SEAL
48	1	9143004	SELF-LOCKING NUT
49	2	9313066	SETSCREW
50	2	9143006	SELF-LOCKING NUT
51	5	05.281.14	FLAT WASHER
52	6	9100106	FLAT WASHER
53	6	9100206	SPRING WASHER
54	6	9313056	SETSCREW
55	5	05.968.06	SELF LOCKING NUT
56	8	0211366	BOLT
57	5	9143007	SELF-LOCKING NUT
58	2	8581190	ADAPTOR ELBOW - 90°
59	2	9100103	FLAT WASHER
60	2	9143003	SELF-LOCKING NUT
61	1	41928.40	SPACER
62	1	41.235.01	PIN
63	2	8650102	BONDED SEAL
64	3	9313097	SETSCREW
65	1	9143009	SELF-LOCKING NUT
66	2	9213123	BOLT
67	4	0211486	BOLT
68	4	05.434.01	ADAPTOR
69	10	7196045	HOSE TIE
70	1	3812119	BLANKING CAP
71	2	8600908	O RING
72	2	8600910	O RING
73	1	8650106	BONDED SEAL
74	4	6000113	ADAPTOR
75	2	8581387	ADAPTOR
76	1	G3812368	ADAPTOR
77	1	09.821.10	DECAL - KEEP NUTS TIGHT
78	1	09.821.15	DECAL - READ INSTRUCTION MANUAL

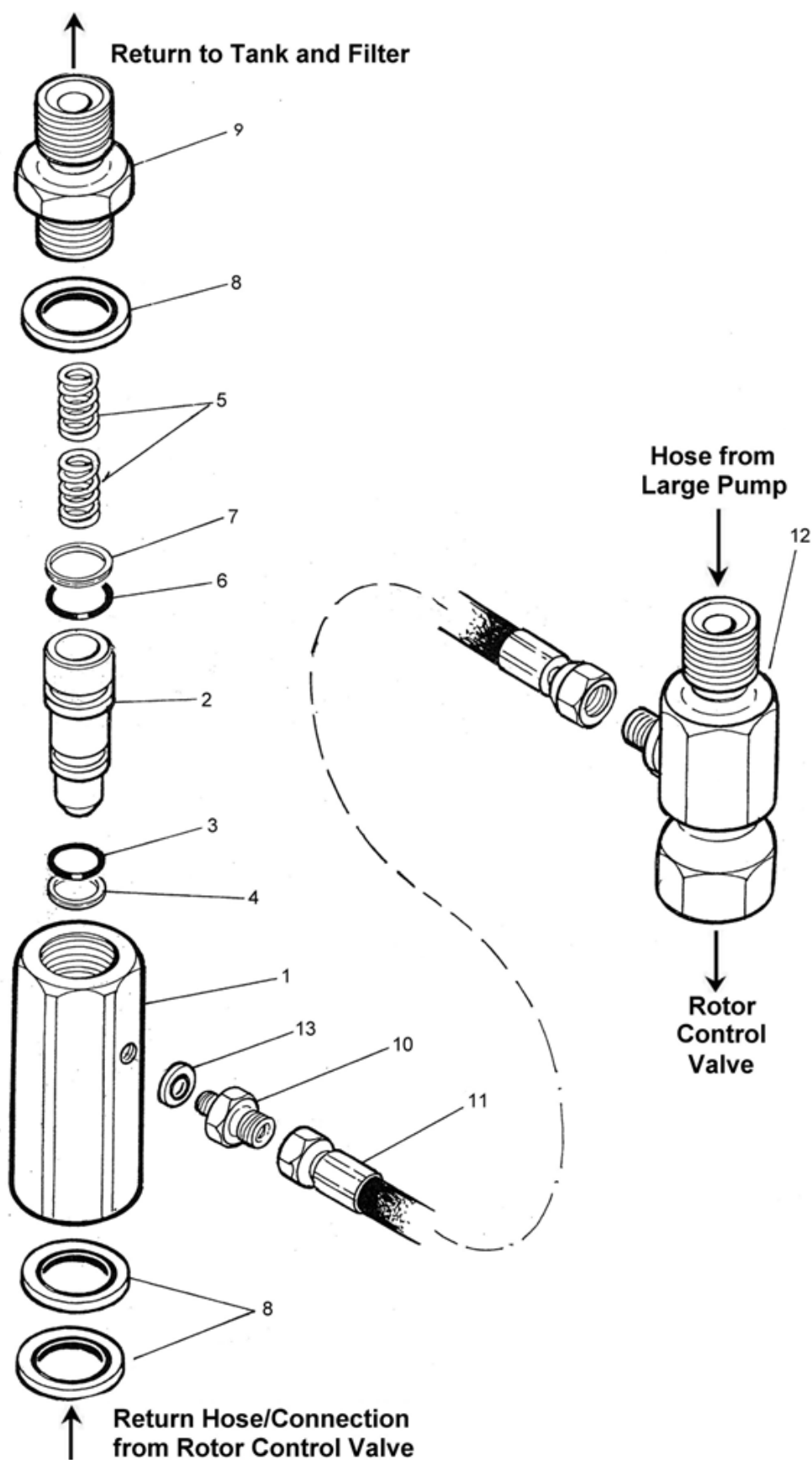
continued...

HYDRAULIC OPERATION MODELS

REF.	QTY.	PART No.	DESCRIPTION
79	1	09.821.20	DECAL - SHAFT ENTANGLEMENT
80	1	1335246	SERIAL No. PLATE
81	4	7103230	POP RIVET
82	2	8581170	ADAPTOR
83	1	05.433.04	BLANKING CAP
84	1	09.821.05	DECAL - CUTTING HEAD DANGER
85	1	09.821.08	DECAL - SAFE WORKING
86	1	09.821.04	DECAL - DANGER THROWN DEBRIS
87	1	41.217.01	ADAPTOR
88	2	8581241	EXTENSION ADAPTOR
89	1	8581432	ADAPTOR - SWIVEL
90	4	8581331	ADAPTOR
91	1	06.418.05	CLAMP PLATE
92	2	7193063	PIPE CLAMP
93	1	9213165	BOLT
94	1	9143005	SELF-LOCKING NUT
95	1	8581211	EXTENSION
96	2	8650108	BONDED SEAL
97	2	42024.07	PIPE CLAMP
98	2	9213084	BOLT
99	1	09.821.26	DECAL - ORBIT HEAD
100	1	7193064	CLAMP PLATE
101	1	41996.01	HOSE KIT - <i>Comprising of:</i>
	2	41349.21	HOSE - 1" BSP FS/F90 x 1100mm
	2	10.002.73	HOSE - 1/4" BSP FS/F90 x 6300mm
	6	10.001.20	HOSE - 1/4" BSP FS/FS x 1000mm
	2	10.002.20	HOSE - 1/4" BSP FS/F90 x 1000mm
	2	10.002.15	HOSE - 1/4" BSP ST/90 x 750mm
	2	10.003.86	HOSE - 3/8" BSP FS/FS x 7600mm
	1	10.003.21	HOSE - 3/8" BSP ST/ST x 1100mm
102	1	21556.01	SWITCH BRACKET
103	1	43177.43	LOOM - DIVERter EXTENSION
104	1	8402208	SWITCH KIT - LIFT FLOAT
105	1	43175.02	COVER PLATE
106	1	42949.01	BACK PRESSURE KIT

BACK PRESSURE VALVE

Module:
42949.01

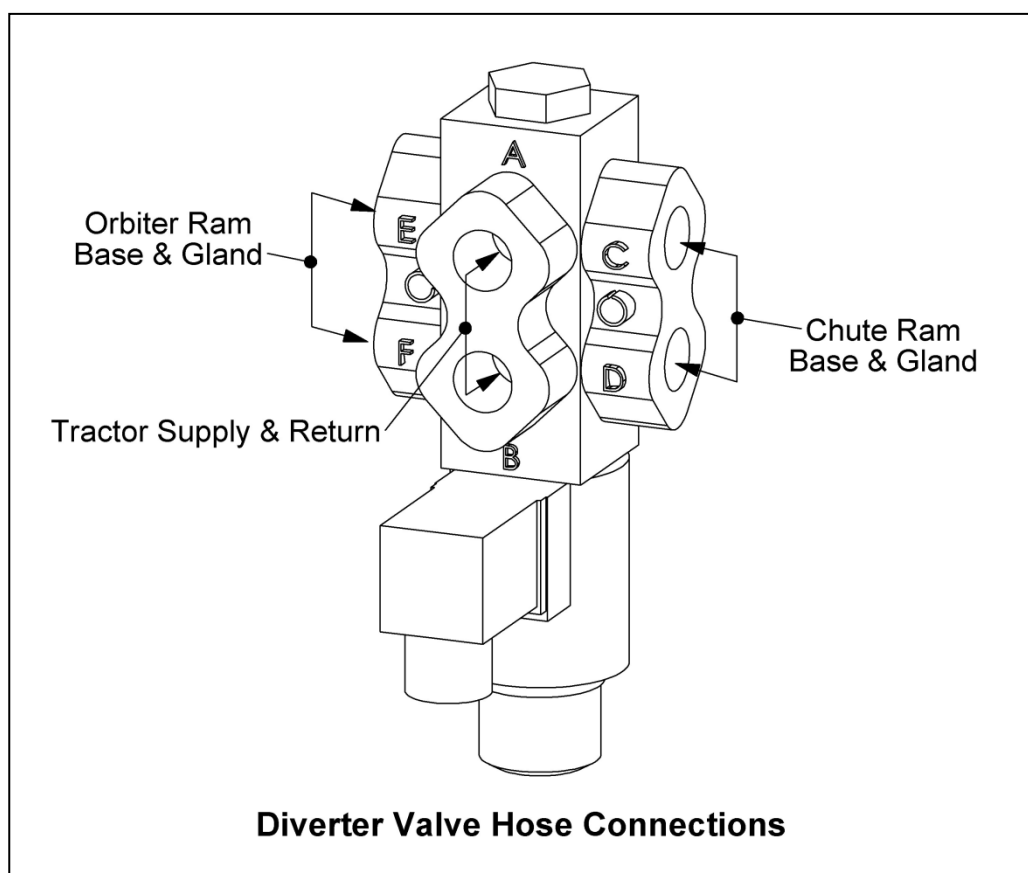


BACK PRESSURE VALVE

REF.	QTY.	PART No.	DESCRIPTION
		42949.01	BACK PRESSURE VALVE
1	1	42949.31	VALVE BODY
2	1	42949.32	PISTON
3	1	8600402	O RING
4	1	8609402	AE RING
5	2	8106027	SPRING
6	1	8600403	O RING
7	1	8609403	AE RING
8	3	8650108	BONDED SEAL
9	1	42949.33	SPECIAL ADAPTOR
10	1	30.052.76	ADAPTOR
11	1	10.001.08	HOSE - 1/4" BSP
12	1	04.056.33	TEE
13	1	05.290.01	BONDED SEAL

HYDRAULIC HOSES

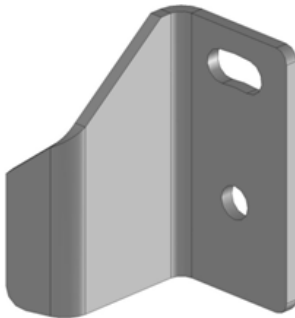
REF.	QTY.	PART NO.	DESCRIPTION
		41996.01	ROTARY DITCHER/CLEANER HOSE KIT
1	2	41349.21	HOSE - 1" BSP FS/F90 x 1100mm
2	2	10.002.73	HOSE - 1/4" BSP FS/F90 x 6300mm
3	6	10.001.20	HOSE - 1/4" BSP FS/FS x 1000mm
4	2	10.002.20	HOSE - 1/4" BSP FS/F90 x 1000mm
5	2	10.002.15	HOSE - 1/4" BSP FS/F90 x 750mm
6	2	10.003.86	HOSE - 3/8" BSP FS/FS x 7600mm
7	1	10.003.21	HOSE - 3/8" BSP FS/FS x 1100mm
1			<i>Motor Drive</i>
2			<i>Tractor to Diverter Valve (Ports A & B)</i>
3			<i>Tractor to Diverter Valve Extention (For use as required)</i>
4			<i>Diverter Valve (Ports E & F) to Orbiter Ram</i>
5			<i>Diverter Valve (Ports C & D) to Chute Ram</i>
6			<i>Motor Drain</i>
7			<i>Motor Drain</i>



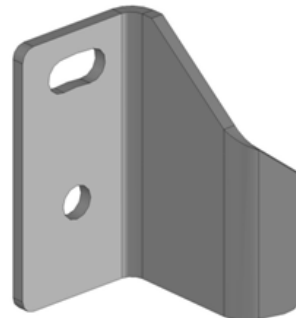
BLADE OPTIONS



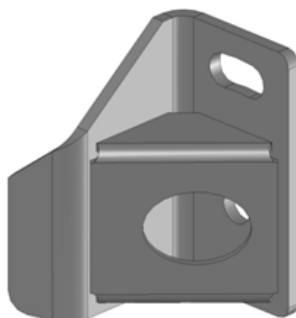
**Double Edged Blade
(Part No. 41.216.01)**



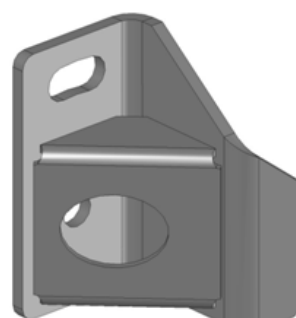
**L/H Standard Duty Single Edged Blade
(Part No. 41936.01)**



**R/H Standard Duty Single Edged Blade
(Part No. 41936.02)**



**L/H Heavy Duty Single Edged Blade
(Part No. 41936.03)**



**R/H Heavy Duty Single Edged Blade
(Part No. 41936.04)**